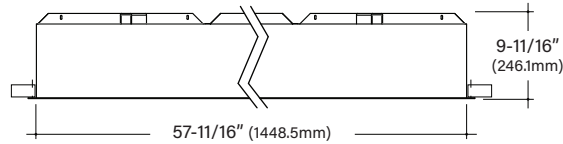




# FINA F60

60" Recessed Architectural Round



## Key Features

- Extruded aluminum housing is rolled and welded for seamless finish with 1/4" trim
- Aluminum top cover conceals all electrical components. Highly reflective die-formed white painted steel reflector
- FINA offered with a 5-year limited warranty. Covers LED, driver and fixture
- IC Rated, UL and cUL Listed, approved for dry/damp location
- Maximum fixture weight is 110 lbs
- Room-side maintenance for LED system
- Buy American Act compliant



Example Part #: F60-A-830HO-G-U-OL2-1-0-W



A	-----	-----	---
SHIELDING	CRI, CCT & OUTPUT	MOUNTING	VOLTAGE
<b>A</b> - Flat Satine Lens <i>Shielding pg. 2</i>	<b>27</b> _ _ - 2700K <b>30</b> _ _ - 3000K <b>35</b> _ _ - 3500K <b>40</b> _ _ - 4000K <b>CL</b> _ _ _ _ _ - Custom Lumens <b>CW</b> _ _ _ _ _ - Custom Watts <i>Lumen Output pg. 2</i>  <i>Example: 830HO is 8 = 80 CRI; 30 = 3000K;                      HO = High Output; Blank = Standard Output</i>	<b>G</b> - Grid Ceiling <b>FL</b> - Flanged <b>NF</b> - Non-Flanged <b>SF</b> - Spackle Flange <i>Mounting pg. 3</i>	<b>U</b> - Universal (120 thru 277V) <b>1</b> - 120V <b>2</b> - 277V <b>3</b> - 347V <i>Voltage pg. 3</i>

---	---	---	---
DRIVER	CIRCUITING	BATTERY & EMERGENCY	FINISH
<b>FSD</b> - Factory Select Driver (1%, 0-10v) <b>PL2</b> - Advance Xitanium (1%, 0-10v) <b>OL2</b> - eldoLED Optotronic (1%, 0-10v, standard) <b>OL4</b> - eldoLED Optotronic 347v (1%, 0-10v) <b>EE1</b> - eldoLED ECOdrive (1%, 0-10v) <b>ES1</b> - eldoLED SOLOdrive (0.1%, 0-10v) <b>LH1</b> - Lutron Hi-lume (1%, EcoSystem) <b>PS1</b> - Advance Xitanium (50%/100%) <i>Driver pg. 4</i>	<b>1</b> - Single Circuit <b>E</b> - Emergency (entire fixture) <b>N</b> - Night Light (entire fixture) <i>Circuiting pg. 4</i>	<b>0</b> - None <b>FSB</b> - Factory Select Battery <b>FSG</b> - Factory Select ALCR <b>GI</b> - Iota ETS DR <b>GB</b> - Bodine GTD <b>11C</b> - Iota 10W, CEC Listed <b>1P</b> - Philips Bodine 10W <i>Battery and Emergency pg. 4</i>	<b>W</b> - White <i>Finish pg. 5</i>

---	---
FIXTURE OPTIONS	CONTROLS
<b>CP</b> - Chicago Plenum <b>AM</b> - Antimicrobial Paint <b>FW6</b> - 6' Flex Whip <b>DSP</b> - Customer Supplied Battery/Driver/ Sensor <b>GMF</b> - Slow Blow Fusing <i>Fixture Options pg. 5</i>	<i>Pinnacle is able to accommodate different control solutions from different manufacturers. Consult Factory for more information.</i>

Specifications and dimensions subject to change without notice. Specification sheets that appear on pinnacle-ltg.com are the most recent version and supersede all other previously printed or electronic versions.

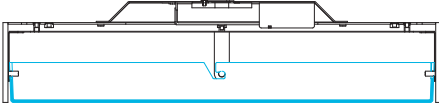


## Shielding

- White virgin acrylic lens with matte finish, removable for LED access

### A

Flat Lens



## Output

- Specify either 80 or 90 CRI
- Longer lead-time may apply for 90 CRI. Consult factory.
- 90 CRI = R9≥50

## Custom Output- Lumens OR Wattage

<b>CL</b> _____	Specify CRI, CCT and desired lumens (i.e. CL8352000)	Specify lumens between standard offering listed below. Lumens are specified per color temp
<b>CW</b> _____	Specify CRI, CCT and desired wattage (i.e. CW940200)	Specify watts between standard offering listed below

### 80 CRI

	Color	Output	Watts	Shielding	
				A Satine Lens Lumens	LPW
<b>830LO</b>	3000K	Low	119.4	14914	124.9
<b>830MO</b>	3000K	Middle	177.8	21919	123.3
<b>830HO</b>	3000K	High	235.5	28766	122.1
<b>835LO</b>	3500K	Low	119.4	15214	127.4
<b>835MO</b>	3500K	Middle	177.8	22360	125.8
<b>835HO</b>	3500K	High	235.5	29345	124.6
<b>840LO</b>	4000K	Low	119.4	15652	131.1
<b>840MO</b>	4000K	Middle	177.8	23003	129.4
<b>840HO</b>	4000K	High	235.5	30189	128.2

### 90 CRI

<b>927LO</b>	2700K	Low	119.4	11789	98.7
<b>927MO</b>	2700K	Middle	177.8	17326	97.4
<b>927HO</b>	2700K	High	235.5	22738	96.6
<b>930LO</b>	3000K	Low	119.4	12651	106.0
<b>930MO</b>	3000K	Middle	177.8	18594	104.6
<b>930HO</b>	3000K	High	235.5	24402	103.6
<b>935LO</b>	3500K	Low	119.4	13364	111.9
<b>935MO</b>	3500K	Middle	177.8	19641	110.5
<b>935HO</b>	3500K	High	235.5	25776	109.5
<b>940LO</b>	4000K	Low	119.4	13376	112.0
<b>940MO</b>	4000K	Middle	177.8	19659	110.6
<b>940HO</b>	4000K	High	235.5	25800	109.6

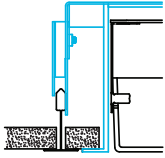


## Mounting

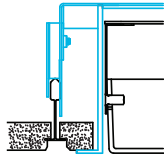
- Designed to install into acoustical grid and inaccessible ceilings
- Tie off fixture to structure with retention wires
- Maximum fixture weight is 110 lbs

### G

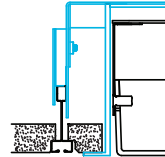
Grid Ceiling with 3/4" (19.1mm) Trim  
15/16" T-Bar



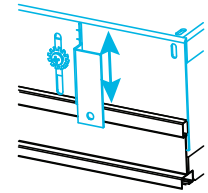
9/16" T-Bar



Screw Slot T-Bar

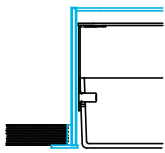


Recessed box allows for 1/2" of adjust-ability to accommodate a variety of grid ceilings



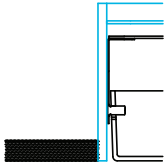
### FL

Standard 3/4" (19.1mm) Flange  
Exposed Flange



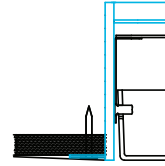
### NF

Non-Flange with 1/4" (6.4mm) Trim  
Metal Pan or Millwork



### SF

Spackle Flange  
Drywall, Flangeless



## Voltage

- Some FINA configurations will not accommodate all voltage options; consult with factory

<b>U</b>	Universal
<b>1</b>	120 volt
<b>2</b>	277 volt
<b>3</b>	347 volt



## Driver

- Standard Driver Option = FSD
- Driver Lifetime: 50,000 hours at 25°C ambient operating conditions
- For more Driver options, see Pinnacle Resource Guide on download pages at pinnacle-ltg.com
- Some FINA configurations will not accommodate all driver options; consult with factory

### 0-10V Drivers

<b>FSD</b>	Factory Select Driver 1%, 0-10v
<b>PL2</b>	Advance Xitanium 1%, 0-10v
<b>PL4</b>	Advance Xitanium 347v 1%, 0-10v, requires 347v
<b>OL2</b>	eldoLED Optotronic, 1%, 0-10v
<b>OL4</b>	eldoLED Optotronic 347v, 1% 0-10v, requires 347v option
<b>EE1</b>	eldoLED ECOdrive 1%, 0-10v Logarithmic
<b>EE2</b>	eldoLED ECOdrive 1%, 0-10v Linear
<b>ES1</b>	eldoLED SOLOdrive 0-10v, 0.1% Logarithmic
<b>ES2</b>	eldoLED SOLOdrive 0-10v, 0% Linear

### DALI Drivers

<b>EE3</b>	eldoLED ECOdrive .1%, DALI (logarithmic)
<b>ES3</b>	eldoLED SOLOdrive .1%, DALI (logarithmic)
<b>OD1</b>	eldoLED Optotronic 1%, DEXAL
<b>OD2</b>	eldoLED Optotronic 1%, DALI 2 Channel

### Lutron Drivers

<b>LH1</b>	Lutron Hi-lume Soft-on, Fade-to-black 1%, EcoSystem, LDE1
<b>LH4</b>	Lutron Hi-Lume 1%, 2-wire, Lutron-LTEA2W, 120v only

### Alternate Drivers

<b>PS1</b>	Signify Advance Xitanium Step Dimming 50%/100%
------------	--

## Circuiting

- Select fixture circuiting from options below
- Some FINA configurations will not accommodate all circuiting options; consult with factory

<b>1</b>	Single Circuit
<b>E</b>	Emergency Circuit only
<b>N</b>	Night Light Circuit only

## Battery & Emergency

- Select battery or emergency options if required
- Battery duration is 90 minutes
- Test button is integral to fixture
- For more Battery options, see Pinnacle Resource Guide

<b>0</b>	No Battery
<b>FSB</b>	Factory Select Battery (10w option)
<b>FSBST</b>	Factory Select Battery (10w, Self Testing)
<b>FSG</b>	Factory Select Automatic Load Control Relay (ALCR), UNV
<b>GI</b>	Emergency Transfer Switch (ETS) DR Emergency Control Device, UNV
<b>GB</b>	Bodine GTD, Generator Transfer Device, 120v or 277v
<b>1IC</b>	lota 10w Integral
<b>1ILL</b>	lota 10w Integral Lithium, Self Testing
<b>1IRH</b>	lota 20w Remote
<b>1P</b>	Bodine 10w Integral
<b>1PRH</b>	Bodine 20w Remote
<b>1PLL</b>	Bodine 10w Integral Lithium, Self Testing

### For Approximate Battery Lumen Output

- Multiply battery wattage X fixture LPW shown on Lumen Table
- 10 (watts) x 92.3 (LPW) = 923 battery lumen output

### Battery & Emergency Ordering Examples

- Single circuit, 10w integral battery      Ordering Code: 1-1P
- Emergency circuit only, 10w integral battery      Ordering Code: E-1P



## Finish

- Powder-coat white painted finish on exposed trim

**W** White

## Fixture Options

- Additional options to enhance the fixture and finish of the product

<b>CP</b>	Chicago Plenum
<b>AM</b>	Antimicrobial Paint
<b>FW6</b>	Flex Whip 6'
<b>DSP</b>	Customer Supplied Battery/Driver/Sensor
<b>GMF</b>	Internal Slow Blow Fuse

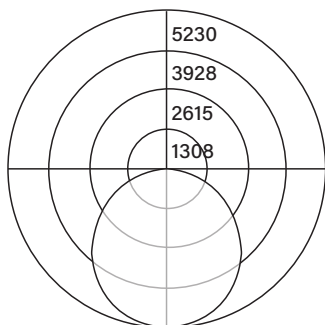
## Controls

- Pinnacle is able to accommodate different control solutions from different manufacturers. Consult Factory for more information.

## Photometrics

### Satine Lens

Test #	ITL84339
Catalog #	F60-A-840HO
Lumens	30500 lm
Watts	238 W
Efficacy	128.1 LPW



### Candela Distribution

Vert Angle	Horizontal Angle				
	0	22.5	45	67.5	90
0	10296	10296	10296	10296	10296
5	10267	10269	10269	10268	10271
10	10149	10154	10154	10153	10156
15	9955	9951	9949	9947	9952
20	9661	9661	9662	9662	9660
25	9292	9288	9290	9287	9275
30	8844	8829	8825	8833	8822
35	8320	8306	8315	8304	8292
40	7729	7724	7718	7718	7708
45	7065	7065	7059	7057	7063
50	6350	6350	6342	6329	6345
55	5584	5579	5573	5570	5559
60	4783	4763	4757	4755	4748
65	3918	3906	3901	3902	3897
70	3031	3021	3016	3020	3014
75	2147	2138	2136	2142	2131
80	1315	1298	1308	1311	1304
85	606	601	603	613	604
90	24	27	27	25	26

### Luminance Data (cd/sq.m)

Angle In Degrees	Average 0-Deg	Average 45-Deg	Average 90-Deg
45	5920	5915	5918
55	5768	5757	5742
65	5493	5469	5463
75	4915	4890	4878
85	4120	4099	4106

For all available IES files, please visit our website at [pinnacle-ltg.com](http://pinnacle-ltg.com). Photometry testing in accordance to IESNA-LM-79-08 at an NVLAP accredited testing laboratory. Testing conducted at 25°C ambient conditions

## Approvals & Certifications

**Construction:** Extruded aluminum housing is rolled and welded for seamless finish with minimal trim detail. Aluminum top cover conceals all electrical components. Highly reflective die-formed white painted steel reflector. Wiring access on both sides and top of housing.

**Shielding:** Single piece diffuse lens creating a fully luminous housing. Available with standard satine lens.

**Mounting:** Designed to install into acoustical grid and inaccessible ceilings. Specify G for acoustical grid ceiling. Specify FL, NF, or SF for inaccessible ceilings. Tie off fixture to structure with retention wires. Maximum fixture weight is 110 lbs.

**LED:** 25°C test environment. Lumen output/wattage has a margin of +/- 5%. Luminaire configurations tested in accordance with IES LM-79. Diodes tested in accordance with IES LM-80. Lifetime calculated using IES TM-21. Minimum lifetime greater than 60,000 hours. MacAdam 3-Step Ellipses. Not all products are Lighting Facts listed. For all available IES files, please visit our website at [pinnacle-ltg.com](http://pinnacle-ltg.com).

**CRI, CCT & Output:** Two lumen packages available. Standard and High (HO). Custom outputs are available. Specify custom lumens or watts between standard offering listed on CRI, CCT & Output page. 80 CRI is available for 3000K, 3500K, and 4000K. 90 CRI is available for 2700K, 3000K, 3500K, and 4000K. 90 CRI = R9≥50.

**Voltage:** Universal (U), 120 volt (1), 277 volt (2) and 347 volt (3) options available. Must specify OL3 in Driver section when 347 volt (3) is selected. Some FINA configurations will not accommodate all voltage options; consult with factory.

**Driver:** Standard Driver Option is Osram 0-10V, 1% = OL2. Electronic driver, Power factor is >0.9 with a THD <20%. Driver Lifetime: 50,000 hours at 25°C ambient operating conditions. Ambient operating range: -20°F/-30°C to TBD. For more driver options, see Pinnacle Resource Guide on download pages at [pinnacle-ltg.com](http://pinnacle-ltg.com). Some FINA configurations will not accommodate all driver options.

**Circuiting:** Select from single circuit (1), Emergency circuit (E) or Night Light circuit (N). Some FINA configurations will not accommodate all circuiting options, consult with factory.

**Battery & Emergency:** Select battery or emergency options if required. If battery or emergency option is not required, enter 0. Battery duration is 90 minutes as standard. Test button is integral to fixture. For more Battery options, see Pinnacle Resource Guide on download pages at [pinnacle-ltg.com](http://pinnacle-ltg.com).

**Finish:** Standard powder-coat textured white. Contact factory for additional custom color and finish options.

**Controls:** Consult factory.

**Labels:** UL and cUL 1598 listed. Standard and HO lumen packages are IC Rated, approved for dry/damp location unless otherwise noted.

**Fixture Weight:** 110 lbs. maximum

**Buy American Act Compliant**

**Warranty:** FINA LED offered with a 5-year limited warranty. Covers LED, driver and fixture.

Specifications and dimensions subject to change without notice. Specification sheets that appear on [pinnacle-ltg.com](http://pinnacle-ltg.com) are the most recent version and supersede all other previously printed or electronic versions.

Designed in Denver, CO • USA | [pinnacle-ltg.com](http://pinnacle-ltg.com) | O: 303-322-5570 F: 303-322-5568

F60\_LED\_SPEC\_NOV2023