

**CONSTRUCTION** Formed 20 gauge cold rolled steel housing. Highly reflective die-formed white painted reflector.

**OPTICS** Unique twin-arched wings and articulated center spine utilize a proprietary layered lens creating a fully luminous housing with optimal glare control. High reflective white reflectors maintain uniform lens brightness.

**ELECTRICAL** T5, T5HO: Program start 120/277 volt integral electronic ballast with less than 10% THD.

Standard T8: Instant start 120/277V electronic ballast with less than 10% THD.

Standard 55W Biax: Program start 120/277 volt integral electronic ballast with less than 15% THD.

Standard 40W Biax: Instant start 120/277 volt electronic ballast with less than 10% THD.

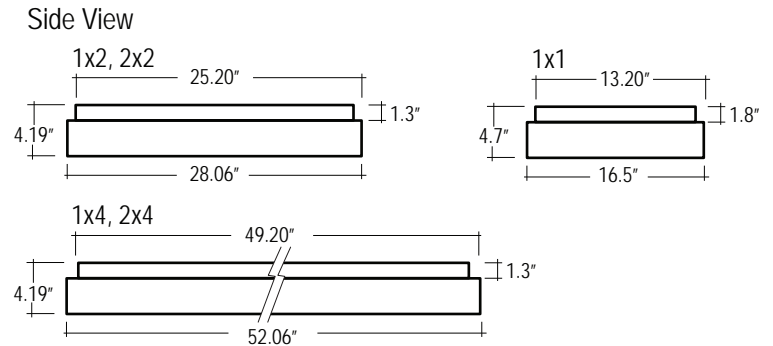
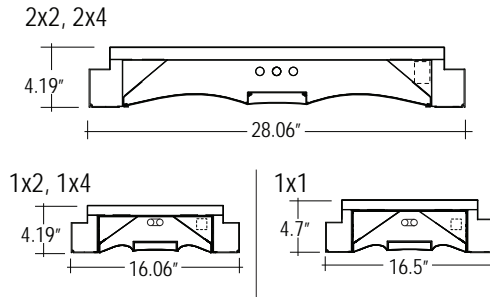
Standard 18W Biax & CFL: Program Rapid Start 120-277 volt integral electronic ballast with less than 10% THD.

Standard single circuit. Each ballast provided with disconnects to meet luminaire disconnect code requirement.

**MOUNTING** Converj is designed to install on inaccessible ceiling. Specify S in the mounting section of the part number. Consult factory for detailed installation instructions.

**FINISH** Standard powder-coat white painted finish on exposed trim.

**LABELS** UL and cUL Listed, approved for dry/damp location unless otherwise noted.



**LUMINAIRE SPECIFICATION**

Sample Catalog #: CJ22A-2T5HO-S-120-1C-W

CJ	HOUSING	SHEILDING	LAMPS	MOUNTING	VOLTAGE	CIRCUIT/WIRING	FINISH	OPTIONS
11-1	Converj 1X1 Direct Luminaire	A- Satine Lens R- Round Perf L- Linear Slot B- Baffle	2x2 only 1BX40- (1) 40W Biax 2BX40- (2) 40W Biax 1BX55- (1) 55W Biax 2BX55- (2) 55W Biax 2x2, 2x4, 1x4, and 1x2 1T5- (1) T5 2T5- (2) T5 3T5- (3) T5 1T5HO- (1) T5HO 2T5HO- (2) T5HO 3T5HO <sup>6</sup> - (3) T5HO 1T8- (1) T8 2T8- (2) T8 3T8- (3) T8 1x2 only 1BX40- (1) 40W Biax 1BX55- (1) 55W Biax 1x1 only 1BX18RS- (1) 18W Biax 2BX18RS- (2) 18W Biax 1CF26RS- (1) 26W CFL 2CF26RS- (2) 26W CFL 1CF32RS- (1) 32W CFL 1CF42RS- (1) 42W CFL	S- Surface Mount	120- 120V 277- 277V 347- 347V <sup>1</sup> UNV- UNV <sup>2</sup> (120/277)	1C- Single Circuit, Normal 2C- Dual Circuit, Normal <sup>3,7</sup> 1D- Single Circuit Dimming <sup>7</sup> 2D- Dual Circuit Dimming <sup>3,7</sup> 1E- Single Circuit with Emergency Circuit <sup>4,7</sup> 1B- Single Circuit with Battery Pack <sup>4,7</sup>	W- White	SW- Step Switching <sup>7</sup> DSM- Remote Daylight Sensor Master - Sensor Included <sup>5,7</sup> DSS- Remote Daylight Sensor Satellite - Sensor Not Included <sup>5,7</sup> GLR- Internal Fast-Blow Fuse

<sup>1</sup>Consult factory for 347 volt ballast.  
<sup>2</sup>Not available for use with a battery pack.  
<sup>3</sup>Dual circuit available for 2 (side-by-side) and 3 (inboard/outboard) lamp configurations.  
<sup>4</sup>Emergency circuit or battery to be on center lamp with 3 lamp configurations.  
<sup>5</sup>DSM includes fixture with remote sensor and dimming ballast. Controls DSS units (up to 19 dimming ballasts).  
DSS includes fixture with a sensor compatible dimming ballast only. Must be used in conjunction with a DSM unit.  
<sup>6</sup>Not available with 1x2.  
<sup>7</sup>Some Converj configurations will not accommodate all options. Consult factory.