

CONSTRUCTION Extruded aluminum housing with cold rolled steel ends.

REFLECTOR Highly reflective die-formed specular anodized aluminum with asymmetric distribution.

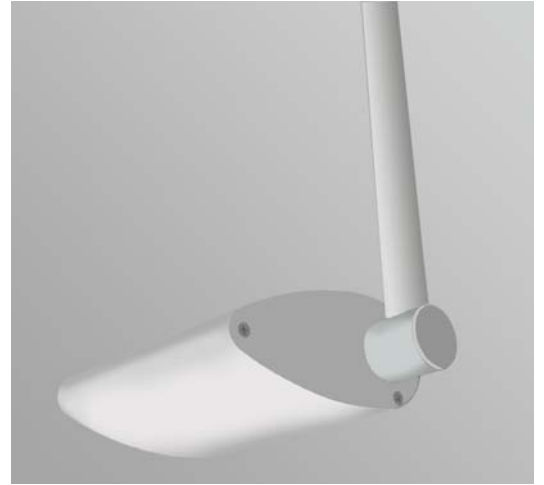
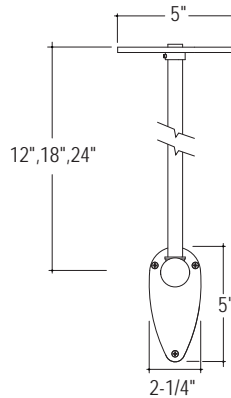
LENS Standard clear tempered glass.

ELECTRICAL 120 volt only

MOUNTING Aluminum hub assembly mounts easily to structure with 5" round canopy. Wire leads are fed through stem. Threaded stem mounts onto hub at fixture. Stem and canopy are painted to match the fixture housing unless otherwise specified.

FINISH Standard powder-coat textured white painted finish. Consult factory for custom color and finishes.

LABELS UL and cUL Listed and approved for dry/damp location.



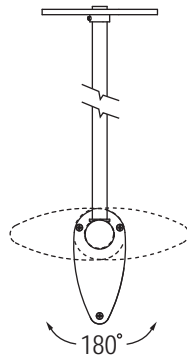
LUMINAIRE SPECIFICATION

Sample Catalog #: VU-Q100D-PH18-120-1C-W

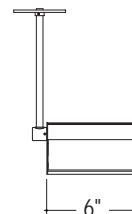
V_-	_____	PH____-	120-	1C-	__-	__
PRODUCT	LAMPS / LENGTH	MOUNTING	VOLTAGE	CIRCUITING	FINISH	OPTIONS
VU- Vertigo Linear indoor luminaire indirect (UP)	Line Voltage (120V) LAMP Q100D- (1) 100W DC 6" Q150D- (1) 150W DC 6"	PH__- Pendant Hub ¹ (specify O.A.L., 12", 18" or 24") PHS__- Pendant Hub Swivel* (specify O.A.L., 12", 18" or 24") ¹ Consult factory for additional pendant hub lengths. Supplied with one pendant per 6" fixture.	120- 120 V	1C- Single Circuit ²	W- Matte White S- Metallic Silver CC- Custom Color	
VD- Vertigo Linear indoor luminaire, direct (DOWN)				² Some Vertigo configurations will not accommodate all electrical options. Consult factory.		

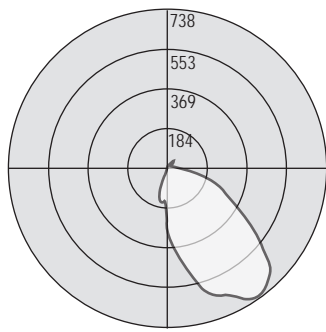
ROTATION

Hub allows for 90 degree rotation of the fixture head in either direction. Move fixture head to desired position and secure hub onto fixture bushing using 2 set screws.

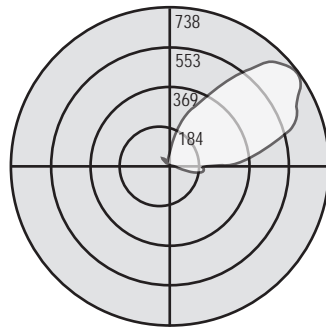


MOUNTING DIMENSION



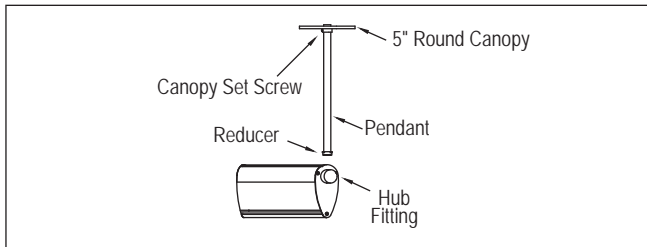


Test #15023
 Catalog # VD-Q100D-PH12-1-W
 Total Luminaire Efficiency = 76.20%



Test #15011
 Catalog # VU-Q100D-PH12-1-W
 Total Luminaire Efficiency = 76.20%

MOUNTING DETAIL



Assembly: Pendant screws into crossbar of junction box. Secure canopy with set screw. Hub fitting screws onto pendant. Fixture wires are fed through pendant. Hub fits over fixture bushing and secured using 2 set screws.