

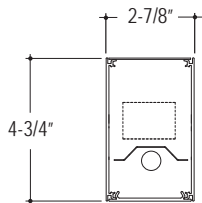
CONSTRUCTION 6063-T5 Extruded aluminum housing. Highly reflective die-formed white painted aluminum reflector, .125" diffuse snap-in acrylic lens with matte finish, removable for lamp replacement.

ELECTRICAL Standard T5 and T5HO: Program start 120/277 volt integral electronic ballast with less than 10% THD. Through wiring with quick connects standard. Standard single circuit. Each ballast provided with disconnects to meet luminaire disconnect code requirement.

MOUNTING Aircraft cable and wall mount available. Aircraft Cable supplied with 5" power and 2" non-power canopies. Refer to installation instructions for appropriate ceiling detail. Canopies are painted white unless otherwise specified.

FINISH Standard powder-coat white painted finish. Consult factory for custom colors.

LABELS UL and cUL Listed, approved for dry/damp location unless otherwise noted.



EX2-A-N



LUMINAIRE SPECIFICATION

Sample Catalog #: EX2-A-N-1T5-24-AC48G1-120-1C-W

EX2-	A-	N-	1T5__-	---	-----	---	---	---	---
HOUSING	DIRECT	INDIRECT	LAMPS	LENGTH	MOUNTING	VOLTAGE	CIRCUIT/WIRING ⁵	FINISH	OPTIONS

EX2- Edge EX 2

N- None, Closed

Individual Units
4- 4'
8- 8'
Continuous Runs
xx'- Specify nominal overall row length in 4' increments

120- 120 V
277- 277 V
347- 347 V⁴
UNV- UNV⁴

W- Matte White
CC- Custom Color

A- Acrylic Lens

1T5- (1) T5 Lamp
1T5HO- (1) T5HO Lamp

Aircraft Cable¹
AC48G1- 1" T-Bar²
AC48G9- 9/16" T-Bar²
AC48GS- Slotted T-Bar²
AC48JB- Junction Box Structure
AC48ST- Structure
AC5__G_- 5" Non-Power Canopy³
AC5__JB- 5" Non-Power Canopy³
Wall
WA- Wall Mount

1C- Single Circuit
1D- Single Circuit Dimming⁵
1B- Single Circuit with Battery Pack⁵
1E- Single Circuit with Emergency Circuit⁵

¹Standard 48" Adjustable Cable. Consult factory for additional lengths.

²Consult factory for tegular edged tiles.

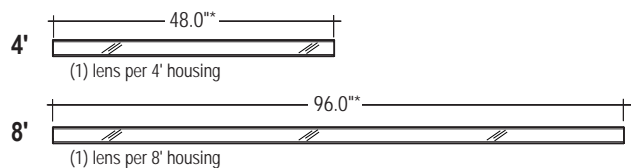
³Replaces standard 2" non-power canopy.

⁴347 and UNV not available with battery packs.

⁵Some Edge EX configurations will not accommodate all electrical options. Consult factory.

COMPONENTS

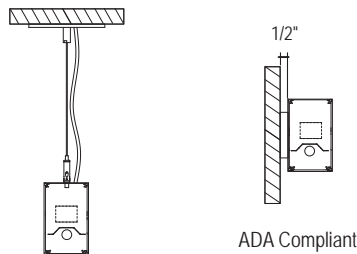
Individual luminaires



	T5	T5HO
4'	1 - 28W	1 - 54W
8'	2 - 28W	2 - 54W

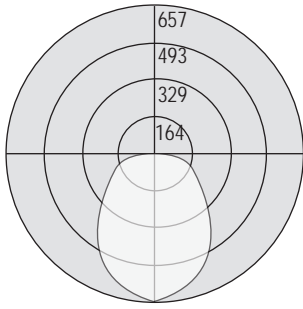
*Add 1/16" for each end plate or 1/8" to the overall length of the row.

Mounting Options

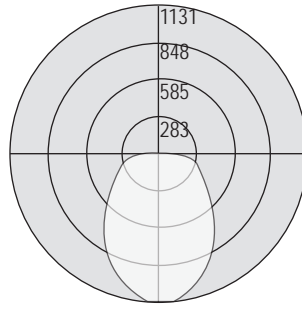


AC - Aircraft Cable

WA - Wall Mount



Test # 203111
 Part #: EX2-A-N-1T5
 Total Efficiency: 66.1%

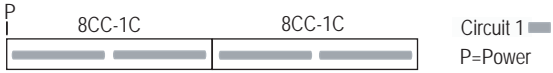


Test # 203112
 Part #: EX2-A-N-1T5HO
 Total Efficiency: 66.6%

FEATURES AND OPTIONS

• CIRCUITING

Single Circuit (1C) Layout



Single Circuit with Emergency Circuit (1E) Layout

