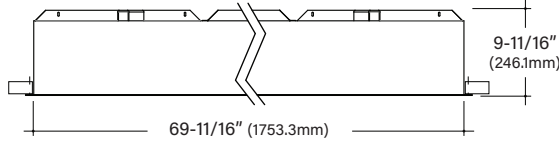




FINA F72

72" Recessed Architectural Round



Key Features

- Extruded aluminum housing is rolled and welded for seamless finish with 1/4" trim
- Aluminum top cover conceals all electrical components. Highly reflective die-formed white painted steel reflector
- FINA offered with a 5-year limited warranty. Covers LED, driver and fixture
- IC Rated, UL and cUL Listed, approved for dry/damp location
- Maximum fixture weight is 147 lbs
- Room-side maintenance for LED system
- Buy American Act compliant



Example Part #: F72-A-830HO-G-U-OL2-1-0-W



SHIELDING	CRI, CCT & OUTPUT	MOUNTING	VOLTAGE
A - Flat Satine Lens <i>Shielding pg. 2</i>	27 - 2700K 30 - 3000K 35 - 3500K 40 - 4000K CL - Custom Lumens CW - Custom Watts <i>Lumen Output pg. 2</i> <i>Example: 830HO is 8 = 80 CRI; 30 = 3000K;</i> <i>HO = High Output; Blank = Standard Output</i>	G - Grid Ceiling FL - Flanged NF - Non-Flanged SF - Spackle Flange <i>Mounting pg. 3</i>	U - Universal (120 thru 277V) 1 - 120V 2 - 277V 3 - 347V <i>Voltage pg. 3</i>
DRIVER	CIRCUITING	BATTERY & EMERGENCY	FINISH
FSD - Factory Select Driver (1%, 0-10v) PL2 - Advance Xitanium (1%, 0-10v) OL2 - eldoLED Optotronic (1%, 0-10v, standard) OL4 - eldoLED Optotronic 347v (1%, 0-10v) EE1 - eldoLED ECOdrive (1%, 0-10v) ES1 - eldoLED SOLOdrive (0.1%, 0-10v) LH1 - Lutron Hi-lume (1%, EcoSystem) PS1 - Advance Xitanium (50%/100%) <i>Driver pg. 4</i>	1 - Single Circuit E - Emergency (entire fixture) N - Night Light (entire fixture) <i>Circuiting pg. 4</i>	0 - None FSB - Factory Select Battery FSG - Factory Select ALCR GI - Iota ETS DR GB - Bodine GTD 11C - Iota 10W, CEC Listed 1P - Philips Bodine 10W <i>Battery and Emergency pg. 4</i>	W - White <i>Finish pg. 5</i>
FIXTURE OPTIONS	CONTROLS		
CP - Chicago Plenum AM - Antimicrobial Paint FW6 - 6' Flex Whip DSP - Customer Supplied Battery/Driver/Sensor GMF - Slow Blow Fusing <i>Fixture Options pg. 5</i>	<i>Pinnacle is able to accommodate different control solutions from different manufacturers. Consult Factory for more information.</i>		

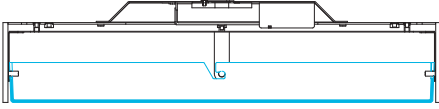


Shielding

- White virgin acrylic lens with matte finish, removable for LED access

A

Flat Lens



Output

- Specify either 80 or 90 CRI
- Longer lead-time may apply for 90 CRI. Consult factory.
- 80 CRI = R9≥19 and 90 CRI = R9≥61

Custom Output- Lumens OR Wattage

CL _____	Specify CRI, CCT and desired lumens (i.e. CL8352000)	Specify lumens between standard offering listed below. Lumens are specified per color temp
CW _____	Specify CRI, CCT and desired wattage (i.e. CW9402000)	Specify watts between standard offering listed below

80 CRI

	Color	Output	Watts	Shielding	
				A Satine Lens	
				Lumens	LPW
830LO	3000K	Low	201.7	24886	123.4
830MO	3000K	Middle	259.1	31442	121.4
830HO	3000K	High	318.1	37559	118.1
835LO	3500K	Low	201.7	25387	125.9
835MO	3500K	Middle	259.1	32074	123.8
835HO	3500K	High	318.1	38315	120.4
840LO	4000K	Low	201.7	26117	129.5
840MO	4000K	Middle	259.1	32997	127.4
840HO	4000K	High	318.1	39417	123.9

90 CRI

927LO	2700K	Low	201.7	19671	97.5
927MO	2700K	Middle	259.1	24853	95.9
927HO	2700K	High	318.1	29689	93.3
930LO	3000K	Low	201.7	21111	104.7
930MO	3000K	Middle	259.1	26672	102.9
930HO	3000K	High	318.1	31861	100.2
935LO	3500K	Low	201.7	22300	110.6
935MO	3500K	Middle	259.1	28174	108.7
935HO	3500K	High	318.1	33655	105.8
940LO	4000K	Low	201.7	22320	110.7
940MO	4000K	Middle	259.1	28200	108.8
940HO	4000K	High	318.1	33687	105.9

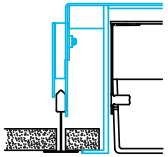


Mounting

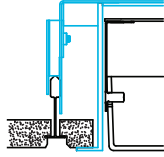
- Designed to install into acoustical grid and inaccessible ceilings
- Tie off fixture to structure with retention wires
- Maximum fixture weight is 147 lbs

G

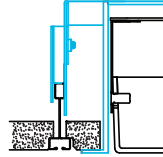
Grid Ceiling with 3/4" (19.1mm) Trim
15/16" T-Bar



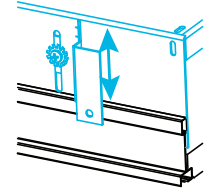
9/16" T-Bar



Screw Slot T-Bar

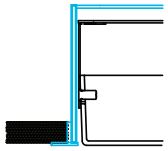


Recessed box allows for 1/2" of adjust-ability to accommodate a variety of grid ceilings



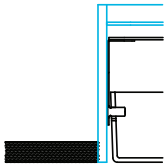
FL

Standard 3/4" (19.1mm) Flange
Exposed Flange



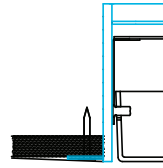
NF

Non-Flange with 1/4" (6.4mm) Trim
Metal Pan or Millwork



SF

Spackle Flange
Drywall, Flangeless



Voltage

- Some FINA configurations will not accommodate all voltage options; consult with factory

U	Universal
1	120 volt
2	277 volt
3	347 volt



Driver

- Standard Driver Option = FSD
- Driver Lifetime: 50,000 hours at 25°C ambient operating conditions
- For more Driver options, see Pinnacle Resource Guide on download pages at pinnacle-ltg.com
- Some FINA configurations will not accommodate all driver options; consult with factory

0-10V Drivers

FSD	Factory Select Driver 1%, 0-10v
PL2	Advance Xitanium 1%, 0-10v
PL4	Advance Xitanium 347v 1%, 0-10v, requires 347v
OL2	eldoLED Optotronic, 1%, 0-10v
OL4	eldoLED Optotronic 347v, 1% 0-10v, requires 347v option
EE1	eldoLED ECOdrive 1%, 0-10v Logarithmic
EE2	eldoLED ECOdrive 1%, 0-10v Linear
ES1	eldoLED SOLOdrive 0-10v, 0.1% Logarithmic
ES2	eldoLED SOLOdrive 0-10v, 0% Linear

DALI Drivers

EE3	eldoLED ECOdrive .1%, DALI (logarithmic)
ES3	eldoLED SOLOdrive .1%, DALI (logarithmic)
OD1	eldoLED Optotronic 1%, DEXAL
OD2	eldoLED Optotronic 1%, DALI 2 Channel

Lutron Drivers

LH1	Lutron Hi-lume Soft-on, Fade-to-black 1%, EcoSystem, LDE1
LH4	Lutron Hi-Lume 1%, 2-wire, Lutron-LTEA2W, 120v only

Alternate Drivers

PS1	Signify Advance Xitanium Step Dimming 50%/100%
------------	--

Circuiting

- Select fixture circuiting from options below
- Some FINA configurations will not accommodate all circuiting options; consult with factory

1	Single Circuit
E	Emergency Circuit only
N	Night Light Circuit only

Battery & Emergency

- Select battery or emergency options if required
- Battery duration is 90 minutes
- Test button is integral to fixture
- For more Battery options, see Pinnacle Resource Guide on download pages at pinnacle-ltg.com

0	No Battery
FSB	Factory Select Battery (10w option)
FSBST	Factory Select Battery (10w, Self Testing)
FSG	Factory Select Automatic Load Control Relay (ALCR), UNV
GI	Emergency Transfer Switch (ETS) DR Emergency Control Device, UNV
GB	Bodine GTD, Generator Transfer Device, 120v or 277v
1IC	lota 10w Integral
1ILL	lota 10w Integral Lithium, Self Testing
1IRH	lota 20w Remote
1P	Bodine 10w Integral
1PRH	Bodine 20w Remote
1PLL	Bodine 10w Integral Lithium, Self Testing

For Approximate Battery Lumen Output

- Multiply battery wattage X fixture LPW shown on Lumen Table
- 10 (watts) x 92.3 (LPW) = 923 battery lumen output

Battery & Emergency Ordering Examples

- Single circuit, 10w integral battery Ordering Code: 1-1P
- Emergency circuit only, 10w integral battery Ordering Code: E-1P



Finish

- Powder-coat white painted finish on exposed trim

W White

Fixture Options

- Additional options to enhance the fixture and finish of the product

CP	Chicago Plenum
AM	Antimicrobial Paint
FW6	Flex Whip 6'
DSP	Customer Supplied Battery/Driver/Sensor
GMF	Internal Slow Blow Fuse

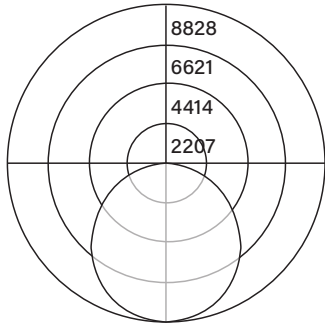
Controls

- Pinnacle is able to accommodate different control solutions from different manufacturers. Consult Factory for more information.

Photometrics

Satine Lens

Test #	ITL84397
Catalog #	F72-A-840HO
Lumens	39919 lm
Watts	322.9 W
Efficacy	123.6 LPW



Candela Distribution

Vert Angle	Horizontal Angle				
	0	22.5	45	67.5	90
0	13540	13540	13540	13540	13540
5	13496	13495	13489	13490	13497
10	13340	13334	13336	13336	13334
15	13060	13068	13073	13071	13075
20	12691	12691	12687	12693	12676
25	12177	12194	12200	12197	12201
30	11601	11607	11612	11597	11607
35	10935	10896	10901	10900	10908
40	10115	10124	10126	10128	10148
45	9242	9271	9253	9275	9272
50	8291	8305	8323	8329	8319
55	7306	7303	7281	7308	7296
60	6216	6214	6219	6219	6210
65	5074	5069	5081	5097	5076
70	3950	3915	3905	3921	3909
75	2760	2771	2782	2780	2792
80	1693	1681	1664	1686	1653
85	767	769	766	770	771
90	46	40	54	51	49

Luminance Data (cd/sq.m)

Angle In Degrees	Average 0-Deg	Average 45-Deg	Average 90-Deg
45	5326	5332	5343
55	5190	5172	5183
65	4892	4899	4894
75	4345	4380	4395
85	3586	3581	3604

For all available IES files, please visit our website at pinnacle-ltg.com. Photometry testing in accordance to IESNA-LM-79-08 at an NVLAP accredited testing laboratory. Testing conducted at 25°C ambient conditions

Approvals & Certifications

Construction: Extruded aluminum housing is rolled and welded for seamless finish with minimal trim detail. Aluminum top cover conceals all electrical components. Highly reflective die-formed white painted steel reflector. Wiring access on both sides and top of housing.

Shielding: Single piece diffuse lens creating a fully luminous housing. Available with standard satine lens.

Mounting: Designed to install into acoustical grid and inaccessible ceilings. Specify G for acoustical grid ceiling. Specify FL, NF, or SF for inaccessible ceilings. Tie off fixture to structure with retention wires. Maximum fixture weight is 147 lbs.

LED: 25°C test environment. Lumen output/wattage has a margin of +/- 5%. Luminaire configurations tested in accordance with IES LM-79. Diodes tested in accordance with IES LM-80. Lifetime calculated using IES TM-21. Minimum lifetime greater than 60,000 hours. MacAdam 3-Step Ellipses. Not all products are Lighting Facts listed. For all available IES files, please visit our website at pinnacle-ltg.com.

CRI, CCT & Output: Two lumen packages available. Standard and High (HO). Custom outputs are available. Specify custom lumens or watts between standard offering listed on CRI, CCT & Output page. 80 CRI is available for 3000K, 3500K, and 4000K. 90 CRI is available for 2700K, 3000K, 3500K, and 4000K. 90 CRI = R9≥50.

Voltage: Universal (U), 120 volt (1), 277 volt (2) and 347 volt (3) options available. Must specify OL3 in Driver section when 347 volt (3) is selected. Some FINA configurations will not accommodate all voltage options; consult with factory.

Driver: Standard Driver Option is Osram 0-10V, 1% = OL2. Electronic driver, Power factor is >0.9 with a THD <20%. Driver Lifetime: 50,000 hours at 25°C ambient operating conditions. Ambient operating range: -20°F/-30°C to TBD. For more driver options, see Pinnacle Resource Guide on download pages at pinnacle-ltg.com. Some FINA configurations will not accommodate all driver options.

Circuiting: Select from single circuit (1), Emergency circuit (E) or Night Light circuit (N). Some FINA configurations will not accommodate all circuiting options, consult with factory.

Battery & Emergency: Select battery or emergency options if required. If battery or emergency option is not required, enter 0. Battery duration is 90 minutes as standard. Test button is integral to fixture. For more Battery options, see Pinnacle Resource Guide on download pages at pinnacle-ltg.com.

Finish: Standard powder-coat textured white. Contact factory for additional custom color and finish options.

Controls: Consult factory.

Labels: UL and cUL 1598 listed. Standard and HO lumen packages are IC Rated, approved for dry/damp location unless otherwise noted.

Fixture Weight: 147 lbs. maximum

Buy American Act Compliant

Warranty: FINA LED offered with a 5-year limited warranty. Covers LED, driver and fixture.

Specifications and dimensions subject to change without notice. Specification sheets that appear on pinnacle-ltg.com are the most recent version and supersede all other previously printed or electronic versions.

Designed in Denver, CO • USA | pinnacle-ltg.com | O: 303-322-5570 F: 303-322-5568

F72_LED_SPEC_NOV2023