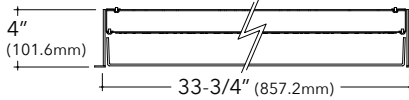


FINA F36D

36" Direct Recessed Architectural Round
with Sound Absorption

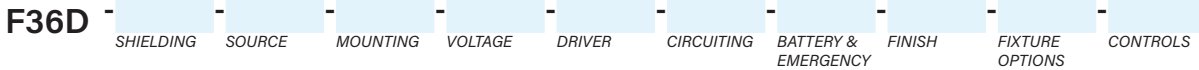


Key Features

- Extruded aluminum housing is rolled and welded for seamless finish with 3/4" trim
- Aluminum top cover conceals all electrical components. Highly reflective die-formed white painted steel reflector
- FINA offered with a 5-year limited warranty. Covers LED, driver and fixture
- ETL Listed conforming to UL1598 in US and CSA 250 in Canada
- Maximum fixture weight is 47 lbs
- Room-side maintenance for LED system
- Buy American Act compliant
- Apparent Noise Reduction Coefficient (NRC) is up to 1.85



Example Part #: F36D-A-830HO-G-U-PL2-1-0-W



SHIELDING ¹	SOURCE ²	MOUNTING	VOLTAGE
A - Flush Satine Lens AL - Drop Satine Lens AR - Regress Satine Lens ASF - Acoustic Solution Flush <i>(use A__ to specify color)</i> ASR - Acoustic Solution Regress <i>(use A__ to specify color)</i> <i>Shielding pg. 2</i>	27 - 2700K 30 - 3000K 35 - 3500K 40 - 4000K CL - Custom Lumens CW - Custom Watts NA - Not Applicable <i>(for specifying SA fixtures)</i> <i>Source pg. 2</i>	G - Grid Ceiling FL - Flanged NF - Non-Flanged SF - Spackle Flange <i>Mounting pg. 3</i>	U - Universal <i>(120 thru 277V)</i> 1 - 120V 2 - 277V 3 - 347V NA - Not Applicable <i>(for specifying SA fixtures)</i> <i>Voltage pg. 4</i>
DRIVER	CIRCUITING	BATTERY & EMERGENCY	FINISH
FSD - Factory Select Driver <i>(1%, 0-10v)</i> PL2 - Advance Xitanium <i>(1%, 0-10v)</i> PS1 - Advance Xitanium <i>(50%/100%)</i> EE1 - eldoLED ECOdrive <i>(1%, 0-10v)</i> ES1 - eldoLED SOLOdrive <i>(0.1%, 0-10v)</i> LH1 - Lutron Hi-lume <i>(1%, EcoSystem)</i> OL2 - eldoLED Optotronic <i>(1%, 0-10v)</i> OL4 - eldoLED Optotronic 347v <i>(1%, 0-10v)</i> NA - Not Applicable <i>(for specifying SA fixtures)</i> <i>Driver pg. 4</i>	1 - Single Circuit E - Emergency <i>(entire fixture)</i> N - Night Light <i>(entire fixture)</i> NA - Not Applicable <i>(for specifying SA fixtures)</i> <i>Circuiting pg. 5</i>	0 - None 1P - Bodine 10W 1I - Iota 10W 1IC - Iota 10W, CEC Listed 1G - Bodine GTD FSG - Factory Select ALCR GI - Iota ETS DR GB - Bodine GTD NA - Not Applicable <i>(for specifying SA fixtures)</i> <i>Battery and Emergency pg. 5</i>	W - White <i>Finish pg. 5</i>
FIXTURE OPTIONS	CONTROLS ³		
CP - Chicago Plenum AM - Antimicrobial Paint FW6 - 6' Flex Whip GMF - Slow Blow Fusing DSP - Customer Supplied Battery/Driver/Sensor NA - Not Applicable <i>(for specifying SA fixtures)</i> <i>Fixture Options pg. 5</i>	DLMFC - Wattstopper DLM <i>(wired)</i> ENLI - Enlighted IOT <i>(remote)</i> ENLC - Enlighted Connected Lighting <i>(remote)</i> NA - Not Applicable <i>(for specifying SA fixtures)</i> <i>Controls pg. 5</i>		

¹When specifying a fixture with only Sound Absorption (no lit components), use NA for the following sections of the part number: SOURCE, VOLTAGE, DRIVER, CIRCUITING, BATTERY & EMERGENCY, or CONTROLS. ²When specifying SOURCE the first __ is for specifying either **8** - 80CRI, **9** - 90CRI. The ending __ are for specifying output, example **HO** - High Output. See output charts for more information. ³Controls can only be used with Single Circuit (1) or Emergency Circuit (E), cannot be used with any battery options. See Controls chart on page 5 for driver options and more information.



Shielding

- White virgin acrylic lens with matte finish, removable for LED access
- Lens available in 3 positions

Ordering Code

A or ASF	AL	AR or ASR
Flush Satine Lens or Acoustic Solution	Drop Satine Lens	Regress Satine Lens or Acoustic Solution

Acoustic Solutions

- 12mm PET Polyester Fiber acoustic panel
- Recyclable and contains up-to 90% post-consumer content
- Colors below are for representation purposes, color may vary from photograph, contact factory for sample
- Specify the color of the Acoustic panel with the numeric code below in the Acoustic Finish portion of the part number. For example, specify **A08** for Nickel

A01 - Charcoal	A02 - Black	A03 - Azure	A04 - Ruby	A05 - Commander	A06 - Coffee Bean
A07 - Almond	A08 - Nickel	A09 - Stone	A10 - Slate	A11 - Pear	A12 - Teal
A13 - Warm White	A14 - Nighttime Blue	A15 - Tiger	A16 - Cool Grey	A17 - Grey Granite	A18 - Dune
A19 - Bone	A20 - Bumblebee	A21 - Gingerbread	A22 - Raven	A23 - Oregano	A24 - Mushroom
					PCC - Custom Color
					Please note there is a minimum order quantity for custom matching. Consult factory for order quantity, price and lead-time.



Source: White LED

- Specify either 80 or 90 CRI
- Longer lead-time may apply for 90 CRI. Consult factory
- 90 CRI = R9≥50

Sound Absorption

NA Not applicable (for Sound Absorption fixtures)

Custom Output- Lumens OR Wattage

CL Specify CRI, CCT and desired lumens (i.e. CL8352000) | Specify lumens between standard offering listed below. Lumens are specified per color temp
CW Specify CRI, CCT and desired wattage (i.e. CW94020) | Specify watts between standard offering listed below

80 CRI

	Color	Shielding A, AL, AR Satine Lens		
		Lumens	Watts	LPW
830LO	3000K	4624	43.7	106
830MO	3000K	7974	74.1	108
830HO	3000K	11182	108.1	103
835LO	3500K	4849	44.2	110
835MO	3500K	8512	74.9	114
835HO	3500K	11788	108.9	108
840LO	4000K	4994	44.2	113
840MO	4000K	8528	74.7	114
840HO	4000K	11957	108.8	110

90 CRI

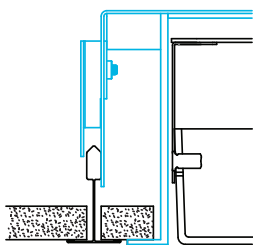
927LO	2700K	3923	45.5	86
927MO	2700K	6632	78.2	85
927HO	2700K	9140	115.3	79
930LO	3000K	4019	45.1	89
930MO	3000K	6777	77.3	88
930HO	3000K	9373	113.8	82
935LO	3500K	4019	45.1	89
935MO	3500K	6777	77.3	88
935HO	3500K	9373	113.8	82
940LO	4000K	4211	45.3	93
940MO	4000K	7104	77.7	91
940HO	4000K	9828	114.6	86

Mounting

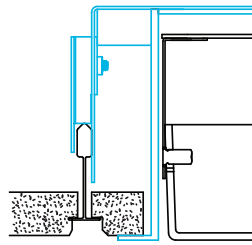
- Designed to install into acoustical grid and inaccessible ceilings
- Tie off fixture to structure with retention wires
- Maximum fixture weight is 47 lbs

G

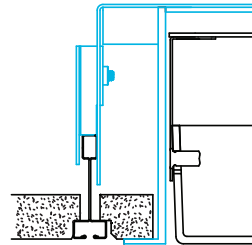
Grid Ceiling with 3/4" (19.1mm) Trim
15/16" T-Bar



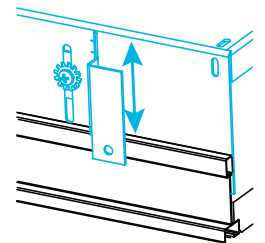
9/16" T-Bar



Screw Slot T-Bar

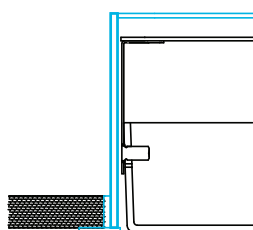


Recessed box allows for 1/2" of adjustability to accommodate a variety of grid ceilings



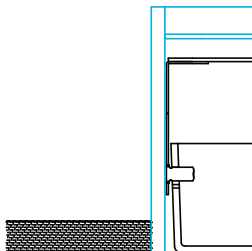
FL

Standard 3/4" (19.1mm) Flange
Exposed Flange



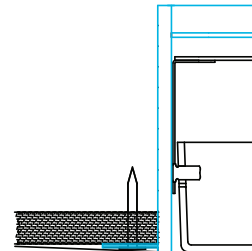
NF

Non-Flange with 1/4" (6.4mm) Trim
Metal Pan or Millwork



SF

Spackle Flange
Drywall, Flangeless



Specifications and dimensions subject to change without notice. Specification sheets that appear on pinnacle-ltg.com are the most recent version and supersede all other previously printed or electronic versions.



Voltage

- Some FINA configurations will not accommodate all voltage options; consult with factory

U	Universal
1	120 volt
2	277 volt
3	347 volt
NA	Not Applicable (for Sound Absorption)

Driver

- Standard Driver Option = FSD
- Driver Lifetime: 50,000 hours at 25°C ambient operating conditions
- For more Driver options, see Pinnacle Resource Guide on download pages at pinnacle-ltg.com
- Some FINA configurations will not accommodate all driver options; consult with factory

0-10V Drivers	
FSD	Factory Select Driver 1%, 0-10v
PL2	Advance Xitanium 1%, 0-10v
PL4	Advance Xitanium 347v 1%, 0-10v, requires 347v
OL2	eldoLED Optotronic, 1%, 0-10v
OL4	eldoLED Optotronic 347v, 1% 0-10v, requires 347v option
EE1	eldoLED ECOdrive 1%, 0-10v Logarithmic
EE2	eldoLED ECOdrive 1%, 0-10v Linear
ES1	eldoLED SOLOdrive 0-10v, 0.1% Logarithmic
ES2	eldoLED SOLOdrive 0-10v, 0% Linear
DALI Drivers	
EE3	eldoLED ECOdrive .1%, DALI (logarithmic)
ES3	eldoLED SOLOdrive .1%, DALI (logarithmic)
OD1	eldoLED Optotronic 1%, DEXAL
OD2	eldoLED Optotronic 1%, DALI 2 Channel
Lutron Drivers	
LH1	Lutron Hi-lume Soft-on, Fade-to-black 1%, EcoSystem, LDE1
LH4	Lutron Hi-Lume 1%, 2-wire, Lutron-LTEA2W, 120v only
Alternate Drivers	
PS1	Signify Advance Xitanium Step Dimming 50%/100%

Circuiting

- Select fixture circuiting from options below
- Some FINA configurations will not accommodate all circuiting options; consult with factory

1	Single Circuit
E	Emergency Circuit only
N	Night Light Circuit only
NA	Not Applicable (for Sound Absorption)



Battery & Emergency

- Select battery or emergency options if required
- Battery duration is 90 minutes
- Test button is integral to fixture
- For more Battery options, see Pinnacle Resource Guide on download pages at pinnacle-ltg.com

0	No Battery
1IC	lota 10w Integral
1ILL	lota 10w Integral Lithium, Self Testing
1IRH	lota 20w Remote
1P	Bodine 10w Integral
1PLL	Bodine 10w Integral Lithium, Self Testing
1PRH	Bodine 20w Remote
FSG	Factory Select Automatic Load Control Relay (ALCR), UNV
GI	Emergency Transfer Switch (ETS) DR Emergency Control Device, UNV
GB	Bodine GTD, Generator Transfer Device, 120v or 277v

For Approximate Battery Lumen Output

- Multiply battery wattage X fixture LPW shown on Lumen Table
- 10 (watts) x 92.3 (LPW) = 923 battery lumen output

Battery & Emergency Ordering Examples

- Single circuit, 10w integral battery Ordering Code: 1-1PLL
- Emergency circuit only, 10w integral battery Ordering Code: E-1PLL

Finish

- Powder-coat white painted finish on exposed trim

W	White
----------	-------

Fixture Options

- Additional options to enhance the fixture and finish of the product

CP	Chicago Plenum
AM	Antimicrobial Paint
FW6	Flex Whip 6'
GMF	Internal Slow Blow Fuse
DSP	Customer Supplied Battery/Driver/Sensor
NA	Not Applicable (for Sound Absorption)

Controls

- Pinnacle Lighting offers easy to specify network control solutions that connect to an intelligent centralized system to maximize lighting energy efficiencies or integral sensors for individual fixture control
- Pinnacle Lighting fixtures ship technology ready; commissioning by others
- Controls can only be used with Single Circuit (1) or Emergency Circuit (E)
- Contact factory for any non-standard configurations for layout, placement, or EM options
- One sensor per housing typical, contact factory for more information

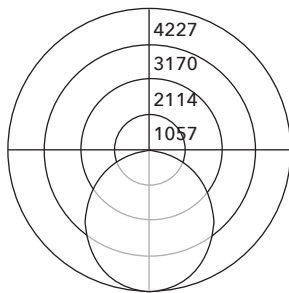
	Solution	Components	Network/Sensor	Connection	RQD Drivers	Limitation
DLMFC	Legrand Wattstopper DLM	LMFC-011	Digital Lighting Management (DLM)	Wired, two RJ45 ports	OL2, OL4	None
ENLI	Enlighted IOT	CU-4E	Enlighted, Remote	Enlighted Cable	Any 0-10v	Not available with 347 volt
ENLC	Enlighted Connected Lighting	CU-4E	Enlighted, Remote	Enlighted Cable	Any 0-10v	Not available with 347 volt
NA	Not Applicable (for Sound Absorption)					



Photometrics

Satine Lens

Test # ITL92435
Catalog # F36D-A-840HO
Lumens 11954 lm
Watts 106 W
Efficacy 113 LPW



Candela Distribution

Vert Angle	Horizontal Angle
0	4196
5	4184
10	4127
15	4031
20	3898
25	3731
30	3536
35	3310
40	3058
45	2785
50	2487
55	2173
60	1840
65	1491
70	1136
75	785
80	460
85	196
90	12

Luminance Data (cd/sq.m)

Angle In Degrees	Average 0-Deg	Average 45-Deg	Average 90-Deg
45	6929	6929	6929
55	6658	6658	6658
65	6190	6190	6190
75	5302	5302	5302
85	3861	3861	3861

For all available IES files, please visit our website at pinnacle-ltg.com. Photometry testing in accordance to IESNA-LM-79-08 at an NVLAP accredited testing laboratory. Testing conducted at 25°C ambient conditions

Approvals & Certifications

Construction: Extruded aluminum housing is rolled and welded for seamless finish with minimal trim detail. Aluminum top cover conceals all electrical components. Highly reflective die-formed white painted steel reflector. Wiring access on both sides and top of housing.

Shielding: Single piece diffuse lens creating a fully luminous housing. Available with standard satine lens.

Acoustic Solutions: Acoustic Solutions panels may be specified in place of lit fixture components to aid in Acoustic Control within a space. Acoustic Solutions material is a 9mm PET Polyester Fiber acoustic panel, containing up to 90% post-consumer content, made by others. Acoustic testing was completed by Riverbank Acoustic. For specific reports, contact Pinnacle directly.

Mounting: Designed to install into acoustical grid and inaccessible ceilings. Recessed, aircraft cable, pendant and surface mount available. For recessed, specify G for acoustical grid ceiling. Specify FL, NF, or SF for inaccessible ceilings. Tie off fixture to structure with retention wires. Maximum fixture weight is 47 lbs.

LED: 25°C test environment. Lumen output/wattage has a margin of +/- 5%. Luminaire configurations tested in accordance with IES LM-79. Diodes tested in accordance with IES LM-80. Lifetime calculated using IES TM-21. Minimum lifetime greater than 60,000 hours. L70 = 146,500 hours and L90 = 45,000 hours MacAdam 3-Step Ellipses. Not all products are Lighting Facts listed. For all available IES files, please visit our website at pinnacle-ltg.com.

CRI, CCT & Output: Three lumen packages available. Low (LO), Mid (MO) and High (HO). Custom outputs are available. Specify custom lumens or watts between standard offering listed on CRI, CCT & Output page. 80 CRI is available for 3000K, 3500K, and 4000K. 90 CRI is available for 2700K, 3000K, 3500K, and 4000K. 90 CRI = R9≥50.

Voltage: Universal (U), 120 volt (1), 277 volt (2), 347 volt (3) options available. Some FINA configurations will not accommodate all voltage options; consult with factory.

Driver: Standard Driver Option is Advance 0-10V, 1% = PL2. Electronic driver, Power factor is >0.9 with a THD <20%. Driver Lifetime: 50,000 hours at 25°C ambient operating conditions. For more driver options, see Pinnacle Resource Guide on download pages at pinnacle-ltg.com. Some FINA configurations will not accommodate all driver options.

Circuiting: Select from Single circuit (1), Emergency circuit (E) or Night Light circuit (N). Some FINA configurations will not accommodate all circuiting options, consult with factory.

Battery & Emergency: Select battery or emergency options if required. If battery or emergency option is not required, enter 0. Battery duration is 90 minutes as standard. Test button is integral to fixture. For more Battery options, see Pinnacle Resource Guide on download pages at pinnacle-ltg.com.

Finish: Standard powder-coat textured white consult factory for chip of standard paint finishes. Contact factory for additional custom color and finish options.

Controls: DLM utilizes wired network connections for digital control through switching and dimming with 0-10v LED drivers. Enlighted Smart Sensor provides multi-functionality including daylight harvesting and PIR occupancy; for IOT platform using 0-10v LED drivers. Enlighted Smart Sensor provides multi-functionality including daylight harvesting and PIR occupancy; for Connected platform using 0-10v LED drivers.

Labels: ETL Listed conforming to UL1598 in US and CSA 250 in Canada. Standard and High output lumen packages are IC Rated for recessed fixtures and are approved for dry/damp location unless otherwise noted.

Fixture Weight: 47 lbs maximum

Buy American Act compliant

Warranty: FINA LED offered with a 5-year limited warranty. Covers LED, driver and fixture.